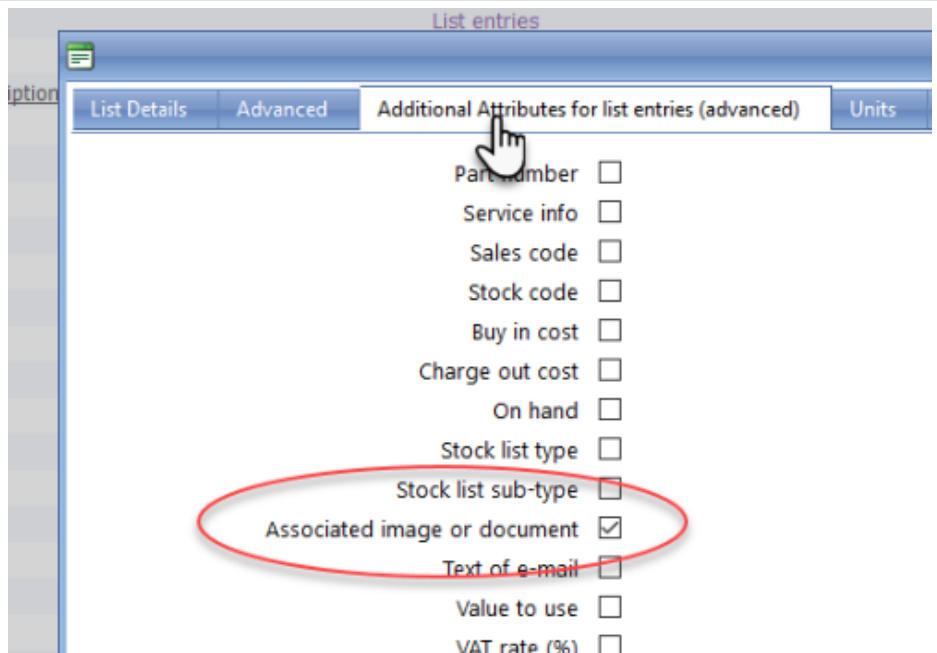


## 1 Show an image on the device

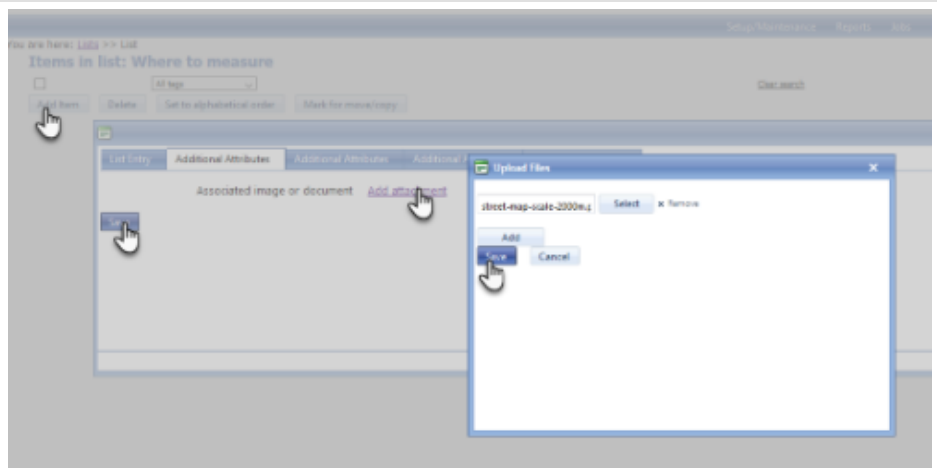
### Show an image on the device

This is useful for showing a diagram on how to do something, such as where measurements should be taken, how to reset a device, maximum load, etc.

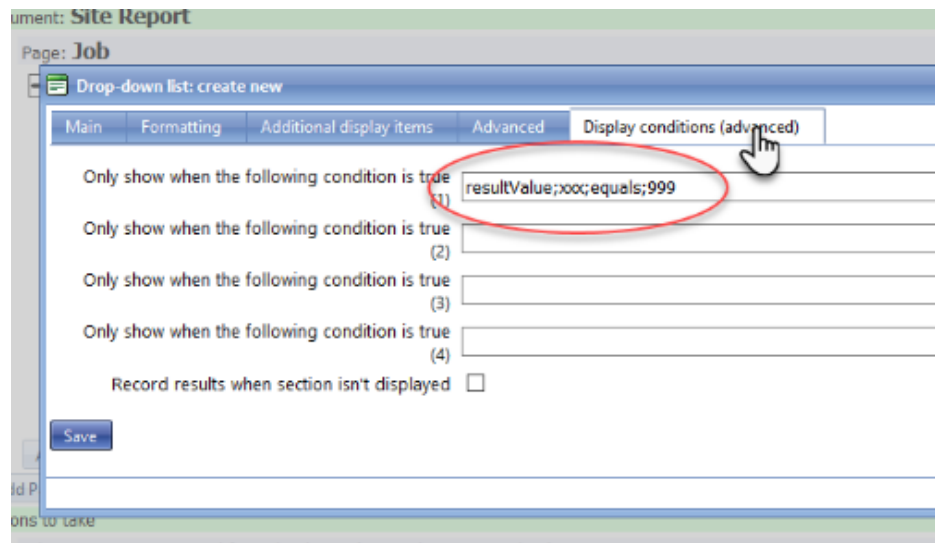
1. **Create a list ('Create list' in the on-line documentation)** and call it something meaningful such as *Where to send*
2. In Additional attributes tick the box for *Associate image/document*
3. Save



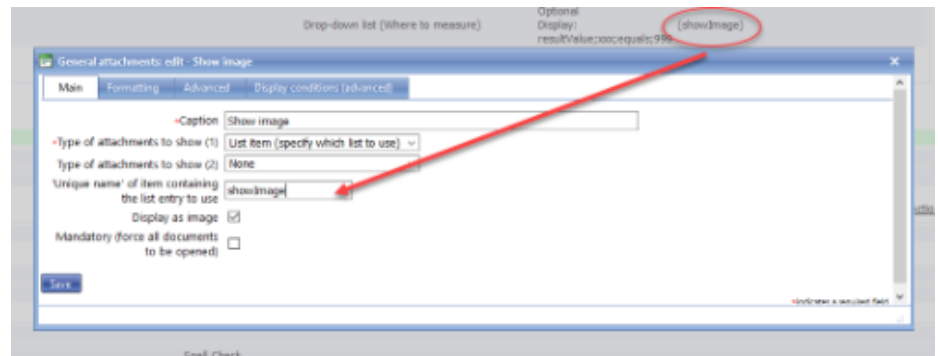
1. **Add an entry ('List entries' in the on-line documentation)** to the list (name is unimportant)
2. Use the attachment link to add the required image



1. Open the **template (on-line documentation)** it needs to appear on
2. Add a **drop-down list (ItemType - Drop-down item)** in the on-line documentation showing the list just created
3. Make it mandatory
4. In Display conditions tab enter `resultValue;xxx>equals;999` to prevent it from being displayed



1. Underneath the drop-down list add a **General attachments (Item Type - General attachments)** in the on-line documentation item
2. Choose *List item* type of attachment
3. Enter the unique name of the drop-down entered above
4. Tick *Display as image*



Your image should now appear on the device just like the map shown here.

If more than one image is available, add them to the list and allow the device user to select from the drop-down list by removing the display condition.

